



Anti-Social Behaviour Strategy

Introduction

Safety in public places is a major issue for many local residents. Anti-social behaviour and binge drinking are consistently raised as a significant concern across the Sutherland Shire. In recognition of these concerns the Mayor, Councillor Lorraine Kelly, tabled a Mayoral Minute at the Council meeting of 20 October 2008. Within this minute the Mayor committed to the development of a strategy to address alcohol related anti-social behaviour and highlighted the need to work with Police, other levels of government and community organisations to address the problems outlined below.

Alcohol consumption and anti-social behaviour ranging from underage young people drinking in parks, through to adults leaving licensed premises late at night often causes many members of the community to feel unsafe. Anti-social behaviour, stemming from the effects of alcohol, prevents others from enjoying public spaces which are designed for all.

The link between alcohol and sport in Australia is long standing. There are unique factors associated with sports clubs serving alcohol that sometimes make it difficult for them to meet the requirements of their licence. For this reason, club committees and licensees need to be very aware of their obligations under the Liquor Act.

The Miranda and Sutherland Liquor Accords have also identified patrons who refuse to leave, who become intoxicated and who are argumentative as particular issues of concern across many licensed premises.

Increasing levels of 'incivility' or anti-social behaviour also impact on the perceived safety of an area. Rudeness, brashness, inappropriate behaviour and loitering are sometimes seen as indicative of more serious crime in an area. Risk taking behaviour, especially amongst young people in public places has also been raised as a concern.

Malicious Damage is one of the few offences where reported levels of crime within Sutherland Shire is close to that of the Sydney average. Malicious damage includes not only graffiti but also deliberate damage to public or private assets such as setting fires and littering. Council is committed to rapidly removing graffiti and implementing repairs associated with vandalism on council assets.

Crime Prevention through Environmental Design (CPTED) principles can be used to increase safety and reduce the opportunity to commit crime within the built environment by reducing the vulnerability of community assets, reducing illegitimate use of a space and increasing levels of surveillance in the area.

Underpinning effective strategic approaches to crime prevention and excessive alcohol consumption is the recognition that law enforcement and crime prevention through environmental design initiatives employed in isolation will not resolve complex social issues which are clearly linked to crime. In addition to these initiatives, there is a need for coordinated, coherent strategies that engage all levels of government, the community sector and local business in strategic partnerships. This move to 'a whole of government' approach requires a significant shift in the thinking of agencies, directly and indirectly involved in crime prevention to:

- Form pooled budgets or co-contribute for joint projects
- Form partnership arrangements across and within levels of government and with the community sector
- Coordinate service delivery and jointly develop specifications for tendered services
- Integrate planning that balances the triple bottom line - social, economic and environmental impacts
- Utilise innovative community engagement and management models
- Create and share joint databases that effectively capture useful information
- Develop mutually agreed performance criteria
- Implement rigorous evaluation and reporting of 'what works' and 'what doesn't'

Sutherland Shire Council Management Plan 2008/2009 – 2010/2011

Principle Activity: A safe community, where everybody has an opportunity to take part in social life

Outcomes identified in the Guide

- Lower crime rates than Sydney average
- Greater responsibility for personal behaviour and reduction in anti-social behaviour
- Improved perceptions of safety by the local community and visitors to the Shire

Council's Objectives

- Improve the level of actual and perceived safety in public places
- Work with local police to reduce alcohol and reduce alcohol related vandalism and anti social behaviour
- Develop, support and implement crime prevention programs using social support and Crime Prevention Through Environmental Design (CPTED) approaches

Sutherland Shire Crime Prevention Plan 2006 - 2010

Key Objective 1 – To increase the level of perceived and actual safety in public spaces

Key Objective 3 – To reduce the amount and impact of alcohol related crime

NSW State Plan

Priority R1 – Reduce rates of crime, particularly violent crime

1. Reduce property crime by 15% by 2016

2. Reduce violent crime by 10% by 2016

Priority R2 –Reducing Re-offending

1. Reduce re-offending by 10% by 2016

Priority R3 – Reduce levels of anti-social behaviour

1. Reduce problems with louts, noisy neighbours, public drunkenness and hoons

NSW Police Force, Corporate Plan 2008-2012

Reduced rates of crime

- Coordinate resources dedicated to crime prevention
- Target repeat offenders and crime hotspots
- Target alcohol and drug related crime

Reduced perception and fear of crime

- *Increase community engagement*
- *Enable local solutions to local problems*

Reduced levels of antisocial behaviour

- *Increase and improve coordination of visible authority*
- *Target antisocial behaviour*

Increased community confidence in police

- *Collaborate with the community and partner agencies*

Links to Existing Committees and Working Groups

- Sutherland Shire Community Crime Prevention and Safety Committee
- Cronulla Safety Action Group
- Sutherland Shire Vandalism Prevention Unit
- Youth Involvement in Crime Working Group
- Cronulla and Miranda Liquor and Gaming Accord
- Sutherland LAC Liquor Accord
- Event Planning Workshops
- Late Night Transport Working Group

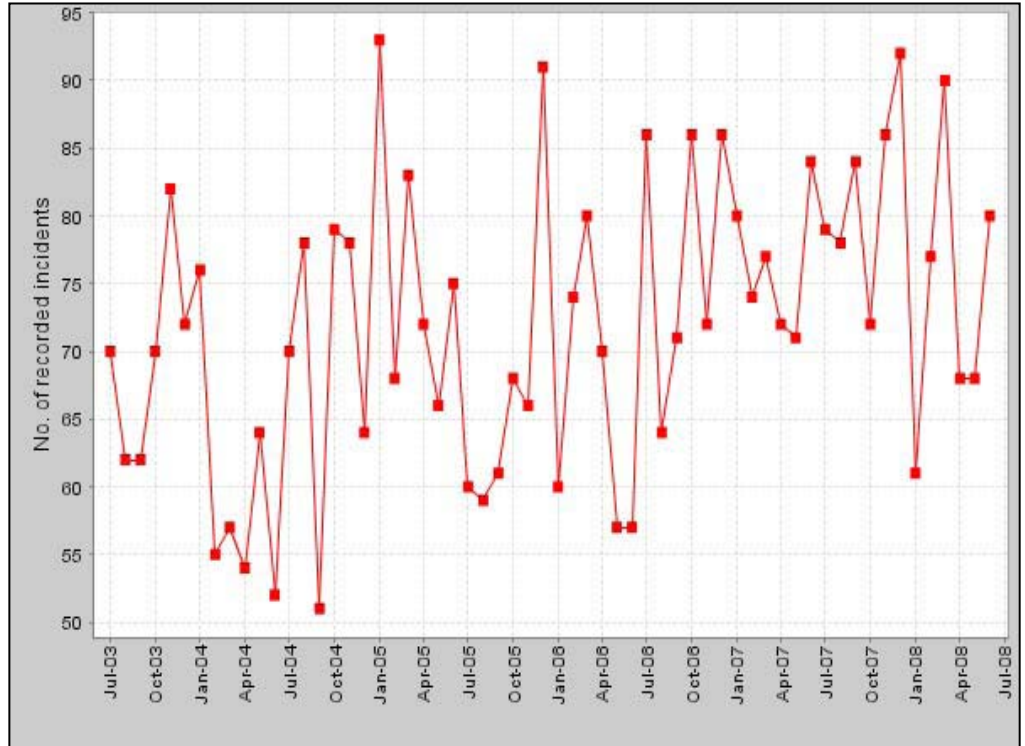
Current crime profiles on specific offences and hotspots

Below is a brief summary of relevant information sourced from "Sutherland Shire: 2007 – Local Government Area Crime Report" published by the NSW Bureau of Crime Statistics and Research (BOCSAR) and the bureau's online data tools

Assault - non-domestic violence related

July 2003 to June 2008

- Statistically significant upward trend over the 60 month period.
- The average annual percentage change was: 4.8%
- There was 847 incidents in 2006
- 320 occurred in an outdoor/public place, 183 on a residential premises and 144 in licensed premises
- Sutherland Shire is ranked 113 out of 143 LGA's
- Incidents are spread fairly evenly throughout the year with minor peaks in July and October.
- Most offences occur between 6pm Friday to 6am Saturday and between 6pm Saturday to 6am Sunday
- The two largest hotspots are Cronulla and Sutherland CBD's with sub-major hotspot in Miranda.



Alcohol Related Assaults

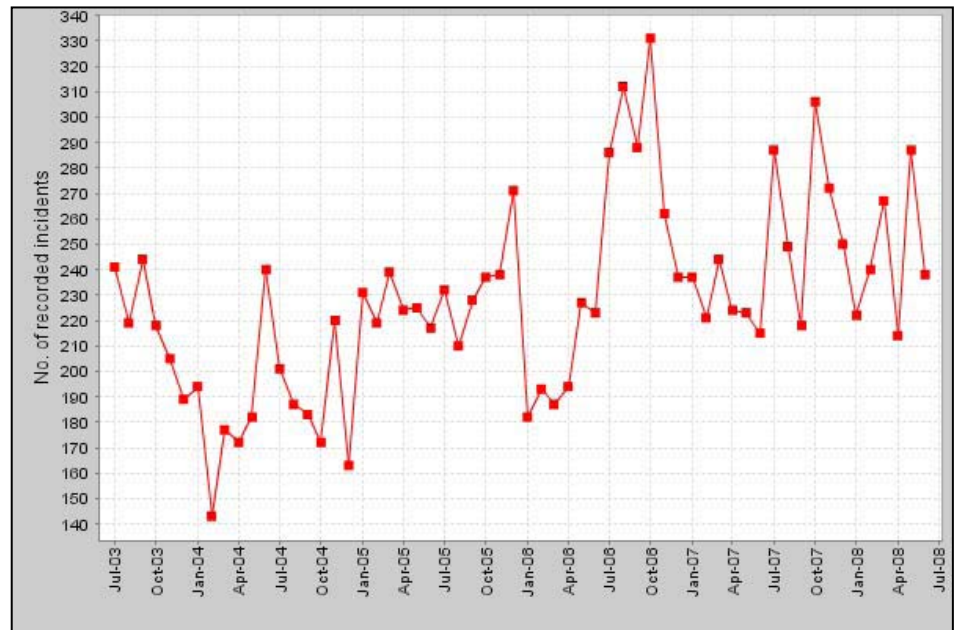
- Alcohol related assaults show a slightly different pattern and are more likely to occur in December, from midnight Saturday to 6am Sunday, with a major hotspot in Cronulla and sub-major hotspot in Sutherland.



Malicious damage to property

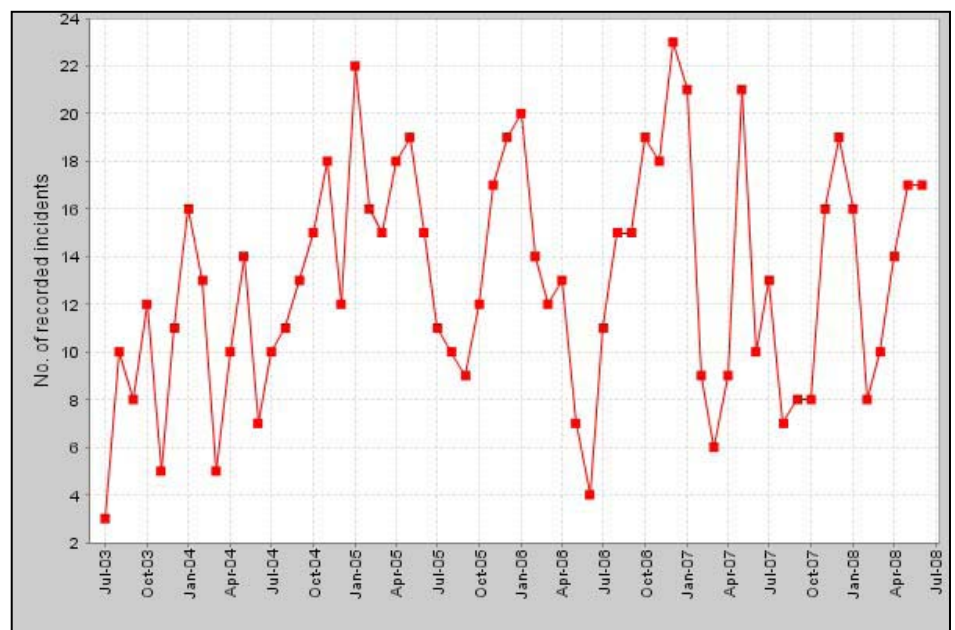
July 2003 to June 2008

- Statistically significant upward trend over the 60 month period.
- The average annual percentage change was: 5.9%
- There was 2,903 reported offences in 2006
- 953 occurred on a residential premises, 584 on education property, and 305 on retail/wholesale property
- Of interest, 519 offences were reported in an outdoor/public place, and 80 on transport facilities which significantly underestimates offences on these type of properties.
- Sutherland Shire is ranked 95 out of 143 LGA's
- Incidents are spread fairly evenly throughout the year with peak in October.
- Most offences occur from 6pm Friday to 6am Saturday and between 6pm Saturday to 6am Sunday, with Saturday night being significantly higher than Friday night
- Malicious Damage is spread throughout the shire with hotspots located along the train lines and focussed on Cronulla



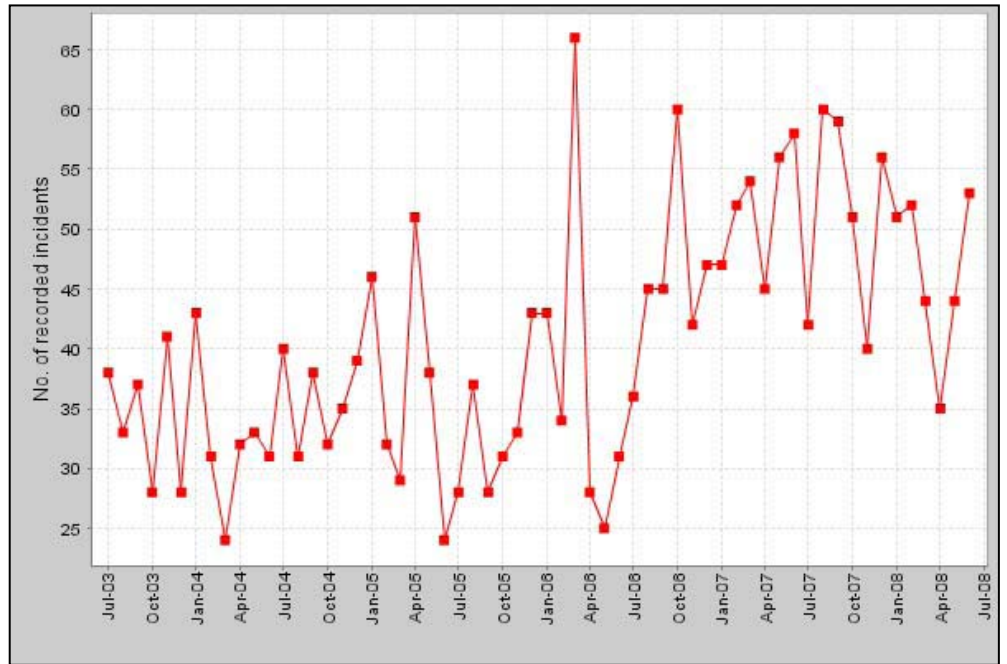
Offensive language,

- July 2003 to June 2008
- No statistically significant upward or downward trend over the 60 month period.
- Peaks in January each year



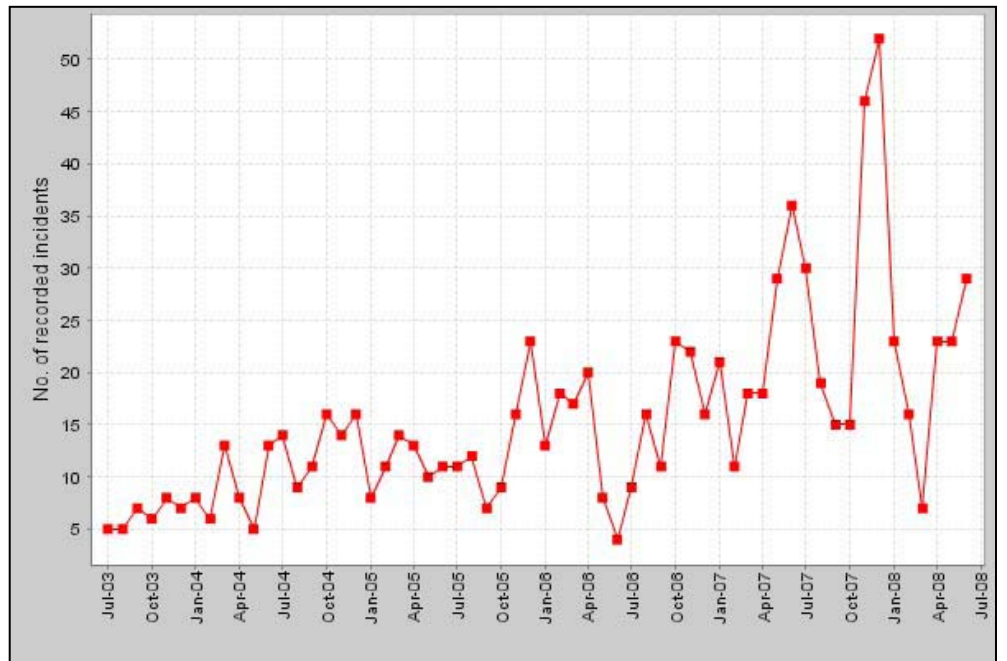
Offensive conduct

- July 2003 to June 2008
- Statistically significant Upward trend over the 60 month period.
- The average annual percentage change was: 34.5%
- Large peak in November/December 2007 although this is not reflected in other years



Harassment, threatening behaviour and private nuisance

- July 2003 to June 2008
- Statistically significant upward trend over the 60 month period.
- The average annual percentage change was: 10.1%
- No set seasonal pattern



Other key local statistics

Sutherland LAC – 01/01/2008 - 30/11/2008 (11 months)

- 63 Your choice invitations issued (as a result of identified underage drinking)
- 5 Consume alcohol in alcohol free zone infringements issued
- 78 incidents for offensive behaviour
- 62 incidents for offensive language

Miranda LAC – 01/01/2008 - 30/11/2008 (11 months)

- 172 Your choice invitations issued (as a result of identified underage drinking)
- 14 “Person under 18 possess liquor in public place” infringements issued
- 8 “Fail to comply with terms of notice erected by council” infringements issued

Australian Bureau of Statistics, Crime and Safety Survey, NSW 2008

- based on 5,100 persons

Reporting Rates for offences

- Assault - 31%
- Robbery – 38%
- Break and enter – 60% (listed for comparison purposes only)

Perception of Crime/Public Nuisance

- 45% of people perceived a crime or public nuisance problem in their neighbourhood
- The most commonly identified problems were
 - vandalism/graffiti/damage to property (26%)
 - dangerous/noisy driving (25%)
 - housebreaking/burglaries/theft from homes (21%)
 - louts/youth gangs (20%)
 - drunkenness (20%).
- This indicates a large proportion of the community identifies anti-social behaviours as a local issue.

Community Consultation

Sutherland Shire Neighbourhood Interaction and Participation Survey

Key points of interest

- Perceptions of safety increased marginally in 2007 while the rankings have remained constant over the four surveys. The biggest change has occurred in respondents' perception of safety walking at night, which has slightly improved but has consistently been rated as the least safe of the four situations.
- Respondents from postcodes 2228 (Miranda) and 2230 (Cronulla) had the lowest relative perceptions of safety. The highest perceptions of safety were in postcodes 2233 (Engadine-Heathcote) and 2224 (Sylvania).
- Respondents in the 20 to 24 age group had the highest average perception of safety in 2007 shifting from one of the lowest averages in 2003. Those aged over 65 continued to have the lowest assessment of safety compared to other groups in the Shire.

Residents who feel unsafe in specific locations			
		Percentage of Respondents	
Location	Year	2007	2003
Local Laneways		69.0	71.7
Train Stations		66.5	70.9
Local Parks		57.0	67.4
Local Car Park		47.5	63.0
Outside Pubs		47.5	47.0
Local Public Transport		44.3	50.4
Local Shopping Centre		32.9	40.4
Total Respondents		158	230

Potential Funding Sources

National Binge Drinking Strategy

- Department of Health and Ageing
- Next available round late 2009
- Total pool of \$3.6M available as partnership grants to \$500,000 or single organisation to \$250,000

Safer Community Compacts

- NSW Attorney Generals Department, Crime Prevention Division
- Next rounds in February and September 2009
- Up to \$50,000pa for Councils with a Safer Community Compact (SCC)
- Must be for an offence reduction strategy listed in the Crime Prevention Plan (SCC)

Smaller Grants are available through a number of sources such as the NRMA Crime Prevention Grants.

Sutherland Shire Anti-Social Behaviour Strategy

Aims and Strategies	How	When	Lead Organisation
---------------------	-----	------	-------------------

Educate the Community on responsible drinking and behaviour			
<ul style="list-style-type: none"> Establish a working group to oversee the development and implementation of an appropriate education program. 	Develop and coordinate an education campaign as per below. Ensure the campaign is appropriate for the respective target groups of children, teenagers and parents.	Ongoing from January 2009	SSC – Community Services and Communications, NSW Police, Depts of Health and Education
<ul style="list-style-type: none"> Utilise high profile sports people and other 'ambassadors' to act as role models 	In conjunction with media strategy, at youth events and during education campaigns	Ongoing from January 2009	As above
<ul style="list-style-type: none"> Provide a focus on primary school and Year 9 students and parents including information on Alcohol Free and Prohibited Zones 	Investigate options for working with Dept of Education and develop a range of communication strategies with students and parents	Options identified by March 2009, and implementation started May 2009.	As above
<ul style="list-style-type: none"> Use personal stories and highlight local area issues 	In conjunction with above	As above	As above
<ul style="list-style-type: none"> Seek regular column/space in the St George and Sutherland Shire Leader for appropriate messages 	Liaise with Leader to ascertain space availability and develop schedule of messages.	January 2009	As above

Reduce the level of anti-social behaviour by patrons leaving licensed premises			
<ul style="list-style-type: none"> Implement projects to train staff and patrons of licensed premises on harm minimisation, drink spiking, responsible service of alcohol, door policies and the like 	In conjunction with staff and security training nights	minimum 2 training nights pa	Miranda and Sutherland Liquor Accords
<ul style="list-style-type: none"> Provide late night transport options for patrons such as secure taxi ranks, shuttle bus and taxi voucher schemes 	1. Work with Liquor Accords to implement Taxi Voucher scheme. 2. Investigate the extension of the secure taxi rank program. 3. Seek additional funding for the shuttle bus	1. August 2009 2. May 2009 3. January 2009	Miranda and Sutherland Liquor Accords and SSC – Road Safety
<ul style="list-style-type: none"> Undertake enforcement activity of licensed premises especially in regard to intoxication and overcrowding 	Overt and covert operations in conjunction with Vikings Ops, Initiate joint operations between Police and SSC	Ongoing	NSW Police
<ul style="list-style-type: none"> Implement the Safer Times Project with Licensed Premises – this project aims to increase the safety in and around premises for women, thereby increasing safety for the entire community 	Seek funding to implement program from 2009/10 FY	Funding confirmed by July 2009	SSC – Community Services (externally funded)
<ul style="list-style-type: none"> Enforcement of licensing conditions especially in regard to late trading venues 	Work with OLGR and NSW Police to monitor and enforce trading breaches and to suggest new licence conditions where warranted	Ongoing	NSW Police
<ul style="list-style-type: none"> Seek additional licence conditions for high risk venues 	Write to OLGR seeking additional conditions where issues have been raised	As required	NSW Police
<ul style="list-style-type: none"> Address the high number of function licence applications by providing advice to OLGR and support and education licensed organisation to run safe events 	Develop an education strategy for function license holders and run an information seminar annually. Assess and comment on license applications	Seminar to be run annually. Comment on applications as they arise.	SSC – Compliance and Community Services, NSW Police

Reduce drinking in public spaces			
<ul style="list-style-type: none"> Educate young people about the dangers of binge drinking and the consequences of breaking relevant laws 	Via media campaign above. Investigate options for working with schools and youth services.	Report on options May 2009 for implementation in 2009/10 FY	Youth Services, Dept of Education
<ul style="list-style-type: none"> Educate Parents on relevant sections of legislation including safe parties, underage drinking and secondary supply to encourage responsible behaviour 	Identify options eg media, school newsletters and develop a marketing strategy	Strategy developed by May 2009	Community Organisations and SSC – Community Services
<ul style="list-style-type: none"> Undertake a review of all alcohol free and alcohol prohibited zones to ensure they are located in appropriate areas and sufficient signage exists to support enforcement 	Review all AFZ prior to renewal date of October 2011. Review APA's as public space is acquired/updated or as hotspots emerge	AFZ – 2011 APA – as required.	SSC - Community Services and Infrastructure Planning
<ul style="list-style-type: none"> Enforce Alcohol Free Zones and Alcohol Prohibited Areas taking advantage of amended legislation regarding confiscation of alcohol 	Investigate options presented with the passing of new legislation and develop a response.	January 2009	NSW Police Force
<ul style="list-style-type: none"> Target hotspots of antisocial behaviour and enforce legislation related to underage drinking, offensive behaviour and offensive language, litter and indecent exposure 	Prioritise hotspots and enforce as per strategy developed above.	As hotspots emerge and for each large event. Hotspot 1 – summer 08/09	NSW Police Force
<ul style="list-style-type: none"> Improve the ability for security and staff of licensed premises (including bottle shops) to identify fake ID's and potential secondary suppliers 	Undertake staff and security training nights, educate licensees at accord meetings	Miranda accord meets monthly, Sutherland Accord meets quarterly, min. 2 training nights pa	Miranda and Sutherland Liquor Accords
<ul style="list-style-type: none"> Develop strategies to respond to the supply of alcohol to minors. 	Improve the ability of enforcement agencies to identify point of sale of alcohol in the possession of young people.	Project developed for implementation in Summer 2009/10	Miranda and Sutherland Liquor Accords and NSW Police Force, OLGR

Reduce drinking in public spaces (cont)			
<ul style="list-style-type: none"> Implement a project to increase the safety during and after private parties especially those involving young people, by providing information to young people and their parents and implementing hall management techniques 	Promote awareness of Celebrate Safe and Party Safe programs through schools and other outlets in conjunction with media strategy	As per media strategy.	NSW Police and SSC – Halls Management
<ul style="list-style-type: none"> Run the Summer Survival Program in public spaces to reduce the level of risk taking behaviour in young people 	Support Youth Services to implement program on an annual basis	Every Summer	Shire Wide Youth Services, Dept Health, SSC, St George Council and Police
<ul style="list-style-type: none"> Run the Winter Survival Program on Council playing fields and at youth events to reduce the level of risk taking behaviour in young people with a focus on underage drinking 	Investigate funding options for this developed program and ensure funding is received annually.	Funding options identified by March, program operates over winter each year.	Shire Wide Youth Services with support from SSC – Community Services (externally funded)
<ul style="list-style-type: none"> Investigate the Good Sports Program or other projects to improve the responsible sale and consumption of alcohol at sporting fields 	Invite Good Sports Organisation to council and prepare a report on options for implementation	April 2009	SSC – Community Services and Sport and Recreation Unit
<ul style="list-style-type: none"> Investigate extending the Your Choice Program to a greater range of young people and parents focussing on its educative role. 	Develop an amended program for educational purposes and run as required. Funding will need to be arranged.	Program developed by June 2009 and funding sought to implement	NSW Police Force
<ul style="list-style-type: none"> Implement resource sharing strategies between council and police to improve the enforcement of alcohol prohibitions in public spaces. 	Develop a Memorandum of Understanding (MOU) between Council and Police on a combined enforcement strategies	MOU developed by March 2009	SSC – Regulation and Enforcement and NSW Police Force

Increase the safety of Specific Locations and across the Shire			
<ul style="list-style-type: none"> Undertake Community Safety Audits and/or Crime Risk Analyses in priority locations across the Sutherland Shire and implement the recommendations of those audits 	Council and Police work together to identify priority locations and hotspots. Recommendations are implemented and audited annually.	1 large CBD safety audit each year. (Engadine March 2009). Approx 70 site visits pa	SSC - Community Services, NSW Police where required
<ul style="list-style-type: none"> Use the media strategically to raise areas of concern whilst highlighting the generally high level of safety across the shire 	Media Releases on new strategies and upon release of crime statistics/other data	As required – minimum quarterly starting January 2009	SSC – Communications and Community Services, NSW Police – Public Affairs
<ul style="list-style-type: none"> Investigate transport options for specific times/days and for events, especially late night and weekends 	Continue Late Night Transport Working Group and working with Liquor Accords on Taxi Voucher scheme	Proposals developed by April 2009	SSC – Community Services, Road Safety and Traffic (externally funded)
<ul style="list-style-type: none"> Use high profile messages targeting young people that are likely to be passed on to other young people to deter underage drinking at high profile sites and/or events 	Provide site and event specific information in high profile locations using, for example, variable message signs	Strategies developed for key events as required	SSC – Communications and Community Services, NSW Police

Reduce Graffiti and other Vandalism			
<ul style="list-style-type: none"> Continue the Vandalism Reward Scheme 	Key stakeholders continue to meet and develop innovative response to the issue	Ongoing – bi-monthly meetings	Vandalism Prevention Unit – SSC, NSW Police and other stakeholders
<ul style="list-style-type: none"> Involve the community in the identification of graffiti offenders. 	Investigate alternative and additional aspects of the Reward Scheme to increase its effectiveness	Report to Council by March 2009	VPU
<ul style="list-style-type: none"> Council Staff Graffiti Removal <ol style="list-style-type: none"> Rapid removal/repair on council assets Targeted removal on high profile residential areas Fee for Service Removal on commercial property 	1. 2 x graffiti removal trucks plus contract work where necessary, 2. where resources allow, 3. as per demand from property owners	Ongoing – daily workload of 3 dedicated staff	SSC – Building Works
<ul style="list-style-type: none"> Consider an increase in the graffiti removal budget 	Examine current workload and removal timeframe and ascertain cost for improvements	Report to Council by March 2009	SSC – Building Works
<ul style="list-style-type: none"> Government Property - Work with other agencies to improve graffiti removal practices (Housing, RTA, Education, Energy, Water) 	Invite representatives from each Department to the first VPU meeting next year to develop strategies	February 2009	VPU
<ul style="list-style-type: none"> Removal from Private Property – provide advice and support to residents affected by graffiti and vandalism 	Develop a communication strategy for resident affected by graffiti on prevention and removal strategies	April 2009	VPU
<ul style="list-style-type: none"> Investigate options for Volunteer Removal/Community Service Orders/Work for the Dole 	Meet with Probation and Parol and Juvenile Justice, Develop and implement strategy	April 2009 July 2009	SSC- Community Services, Probation & Parole, Juvenile Justice
<ul style="list-style-type: none"> Target Primary school children – “Respecting Public Space Art Competition” with graffiti learning module for the classroom eg Shire Pride 	Learning module has been developed. Notify schools for term 3 project. Launch at end term 3	September 2009	VPU
<ul style="list-style-type: none"> Community Education and targeted offender deterrence with the ongoing use of the graffiti sticker 	Utilisation of sticker at appropriate locations – develop policy and communicate to all staff	February 2009	SSC – Building Works

Reduce Graffiti and other Vandalism (cont)			
<ul style="list-style-type: none"> Prevention of graffiti in particularly bad locations, based on either the level of graffiti or the negative impact on community- use graffiti database to prioritise. 	Target 3 priority locations per year, assess site, develop recommendations and implement. Impact to be evaluated.	Location 1 – March Location 2 – July Location 3 - Nov	VPU
<ul style="list-style-type: none"> DA Protocol – crime risk assessment to include vandalism – update protocol 	Protocol is currently operating however requires review and update. Police and council staff to be trained in its application	Work has already commenced. Completion of protocol and training begins by March 2009	SSC – Environmental Services and Community Services, NSW Police
<ul style="list-style-type: none"> Responsible Retailers Audits of compliance with sale and display legislation – all retail stores – ongoing project 	Second annual audit to be undertaken to ensure ongoing compliance	June 2009	VPU- all members, Office of Fair Trading
<ul style="list-style-type: none"> Ensuring programs and results/arrests receive appropriate media profile 	Joint media releases indicating arrest and result especially where compensation is granted	As required	VPU and SSC – Communications, NSW Police – Public Affairs
<ul style="list-style-type: none"> Providing police prosecutors with data to enable compensation as part of sentencing – graffiti database 	Costs of removal/repair are clearly documented and database is used correctly. Police access information appropriately.	As required	VPU
<ul style="list-style-type: none"> Covert Camera- Provide evidence to act and prosecute offenders, and to gather information to allow future operations in conjunction with Police 	Covert camera system deployed at hotspots on a rotating basis – police provide operational support to arrest offenders.	Existing camera is operational. New camera systems being trialled in January 2009.	VPU and NSW Police
<ul style="list-style-type: none"> Report offences to Police to allow for proactive tasking and deployment 	Malicious damage offences on council property are reported to PAL. Police use data for tasking and deployment	From 1 January 2009	SSC – Community Services and Security, NSW Police
<ul style="list-style-type: none"> Develop a positive media campaign to promote care for the local area 	Investigate options for campaign and report on recommendations	March 2009	SSC – Community Services and Communications

Deflecting offenders through the provision of alternate activities			
<ul style="list-style-type: none"> Provide events for young people such as band nights which are drug and alcohol free, and support private promoters to run safe and inclusive youth events. 	Youth Events Coordinator to develop annual events plan and promote Sutherland Shire to private promoters	January 09 then annually	SSC – Community Services (Partially externally funded)
<ul style="list-style-type: none"> Provide outreach youth workers targeting anti-social behaviour in high risk public locations including those in isolated areas 	Strengthen role of outreach workers in ASB hotspot locations and present options to council	Report completed by may 2009 with implementation from July 2009	SSC – Community Services and Shire Wide Youth Services (Partially externally funded)
<ul style="list-style-type: none"> Provide places for youth to congregate safely and under supervision with a focus on isolated areas. 	In conjunction with youth events above, and through supporting existing youth centres to run drop-in programs and other activities.	As above and through community development support on an ongoing basis	Youth Services and SSC – Community Services